

## ENVIRONMENTAL PERFORMANCE - SOME, S.A. 2023

### ACTIONS CARRIED OUT IN 2023

**Solar panels.** Since August 2022 SOME S.A. has installed solar panels representing approximately 20% of its electricity consumption.

**Wood waste.** A new manager has been incorporated, which makes it possible to recover wood, achieving a reduction in wood waste.

**PER.** Changes in the degreasing process have reduced the consumption of perchloroethylene and the waste it generates.

## ENVIRONMENTAL PERFORMANCE

During 2023, 7 environmental incidents were opened, 1 of which resulted in non-compliance. Of the 7, only 6 were closed before the end of the year.

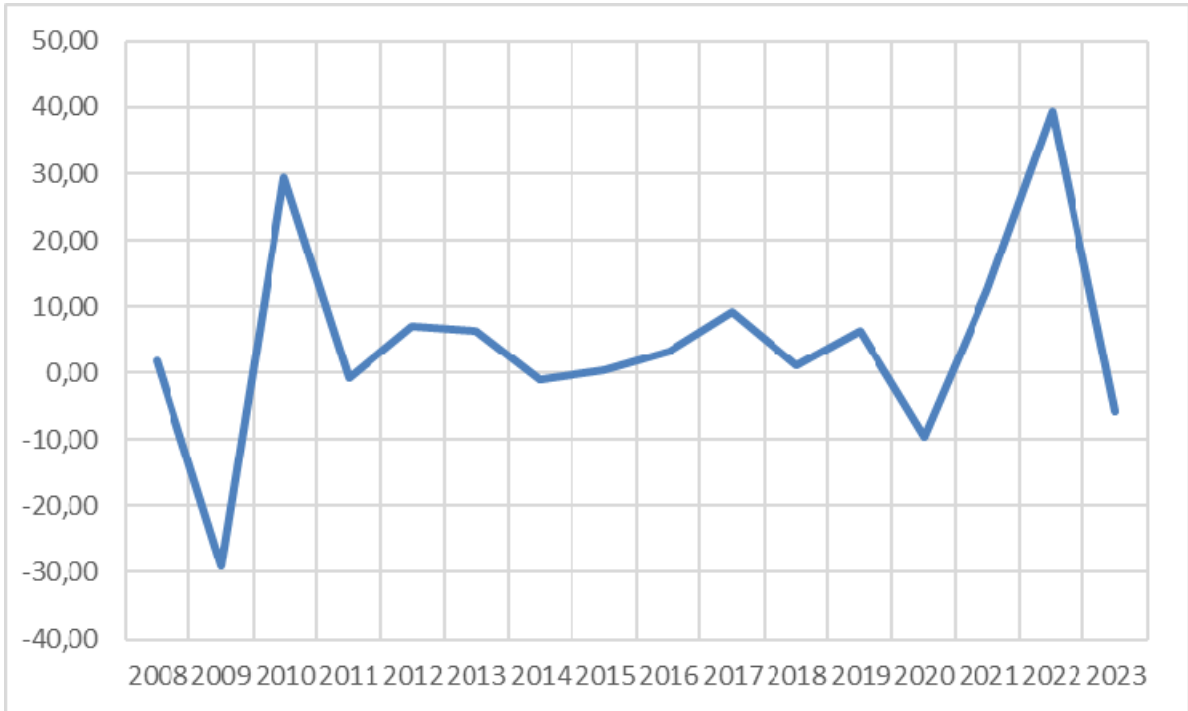
With regard to consumption and waste generation, the data are presented below in relative percentages with respect to previous years.

CONSUMS																						
ASPECTE	UNITATS DE MESURA	2003	2004	2005	2006	2007	2008	2009	2010	2011	2012	2013	2014	2015	2016	2017	2018	2019	2020	2021	2022	2023
Consum Energia	KW	2.138.040	2.375.250	2.458.340	2.825.460	2.821.332	2.892.607	2.196.302	2.675.861	2.582.014	2.684.865	2.742.114	2.908.763	2.998.273	2.977.910	3.108.105	3.027.610	3.026.417	2.801.405	2.955.122	3.171.848	2.818.127
Consum Gasoli	Litres	48.619	72.159	77.365	47.940	48.650	52.446	53.252	63.293	57.069	63960	79241	41000	44.170	50.002	50.000	70.000	63.500	63.500	65.042	65.000	65.000
Consum Aigua Xarxa	m <sup>3</sup>	2.885.81	1.216.55	1.250.46	1.558.36	1.182.21	1.476.65	1.168.20	1.864.76	1.966.48	1.217.72	1.469.00	1.081.00	1.081.00	1.298.00	2.084.00	1.109.00	1.086.00	1.794.00	1.644.00	1.561.00	1.371.00
Consum Aigua Pou	m <sup>3</sup>	1.835.86	734.94	992.11	870.35	949.04	1.014.62	916.07	1.289.15	2.287.75	2.896.00	2.262.00	408.00	502.00	996.00	963.00	2.683.00	789.00	527.00	462.00	368.00	194.00
GENERACIÓ DE RESIDUS																						
ASPECTE	UNITATS DE MESURA	2003	2004	2005	2006	2007	2008	2009	2010	2011	2012	2013	2014	2015	2016	2017	2018	2019	2020	2021	2022	2023
NO PERILLOSO																						
Fusta	Tn	14,68	50,05	61,32	64,71	63,93	69,48	37,80	59,53	63,63	58,5	58,1	21,5	63,47	77,58	78,17	75,95	96,44	101,45	105,34	114,04	105,04
Ferralla Metal·lica	Tn	4.825,00	5.909,00	5.614,09	6.295,21	6.647,58	6.804,00	4.862,34	6.372,03	5.891,07	5673,902	6056,3	6340,536	6663,53	6977,182	7172,495	7565,49	7844,51	7111,09	7367,01	8482,55	8819,406
Pols fèrrica																				0,14	0,84	0,917
Paper i cartó	Tn	17,50	15,57	18,81	19,24	27,09	29,45	19,20	21,90	24,50	19,55	31,8	29,9	25,35	29,09	36,36	28,62	28,41	29,46	24,68	30,32	25,49
Residus Bàsics	m <sup>3</sup> /Tn	17,56	19,36	23,59	16,98	27,76	11,12	17,16	17,92	8,96	23,84	12,52	21,43	15,28	14,12	12,66	15,06	15,78	23,05	28,08	28,59	28,59
Toners, cartutxos tinta	Kg	7,00	50,00	20,00	69,00	120,00	150,00	95,00	60,00	9,00	12	9	25	18	50,93	19,5	29,8	0	0,16	0,08	0,025	0,007
Plàstic	Tn		3,42	1,24	3,90	5,21	3,35	2,90	4,50	5,70	5,65	7,13	7,48	6,44	10,03	8,95	12,66	11,1	18,47	11,5	13,38	9,04
Comp. electrònics	Kg				13,00	47,00	17,00	22,00	20,00	10,00	17,5	0	171,5	207	781	1363	3145	1155	965	1510	968	1594
Carbó actiu	Tn				0,20	0,20	0,22							0,211			0,185	0	0	0	0,204	0
Llots desbarbat	Tn															3,2	1,68	0	3,62	3,08	0	2,72
Maizor	Tn																5,2	5,82	4	5,12	3,78	0
PERILLOSO																						
Oil	L/Tn	7,21	10,66	11,30	11,47	11,79	19,20	13,60	19,70	14,02	6,12	7,74	9,63	7,92	9,72	10,44	16,2	6,57	7,29	8,73	6,93	5,76
Perclorètil·le	L/Tn		4,80	1,10	3,25	0,72	1,95	1,05	1,85	1,38	3,78	2,77	3,679	1,15	5,38	3,56	3,49	2,55	2,875	2,89	4,065	1,04
Bidons buits	Uf/Tn		1,27	1,05	1,01	1,10	2,28	0,50	0,48	0,432	1,156	0,658	0,515	2,037	1,771	1,66	1,365	0,44	0,659	1,381		
Fluorescents	kg/Tn	36,00	82,00	46,00	75,00	20,50	35,50	78,00	43,00	44,00	35	0	0,062	0,071	0,046	0,041	0,029	0,037	0,011	0,004	0,027	0,004
Piles	Kg/Tn	20,00	29,00	14,00	42,50	65,50	23,50	15,00	78,00	30,00	12	0	0,062	0,023	0,026	0,013	0,01	0,044	0,011	0,01	0,01	0
Aigües proced.	Tn	58,84	104,01	82,60	61,60	107,14	82,84	63,98	154,48	125,78	137,4	82,38	65,86	132,3	149,2	150,2	146,98	101,98	125,6	148,26	150,72	163,8
Filtres absorbents	Tn			0,02	0,09	0,10	0,24	0,12	0,07	0,04	0,134	0	0,057	0	0,094	0,259	0,575	0,214	0,231	0,07	2,849	2,825
Aerosols	Tn												0,022	0,054	0,025	0,031	0,02	0	0,05	0,029	0,032	
Residus pintura	Tn														0,01	0	0,04	0,025	0	0,06	0,089	0,114
Filtres d'oli	Tn																			0,31	0	0

Please note that when 100 is indicated, it means that we started the previous year with a value of 0 and that waste was generated again that year.

## BILLING

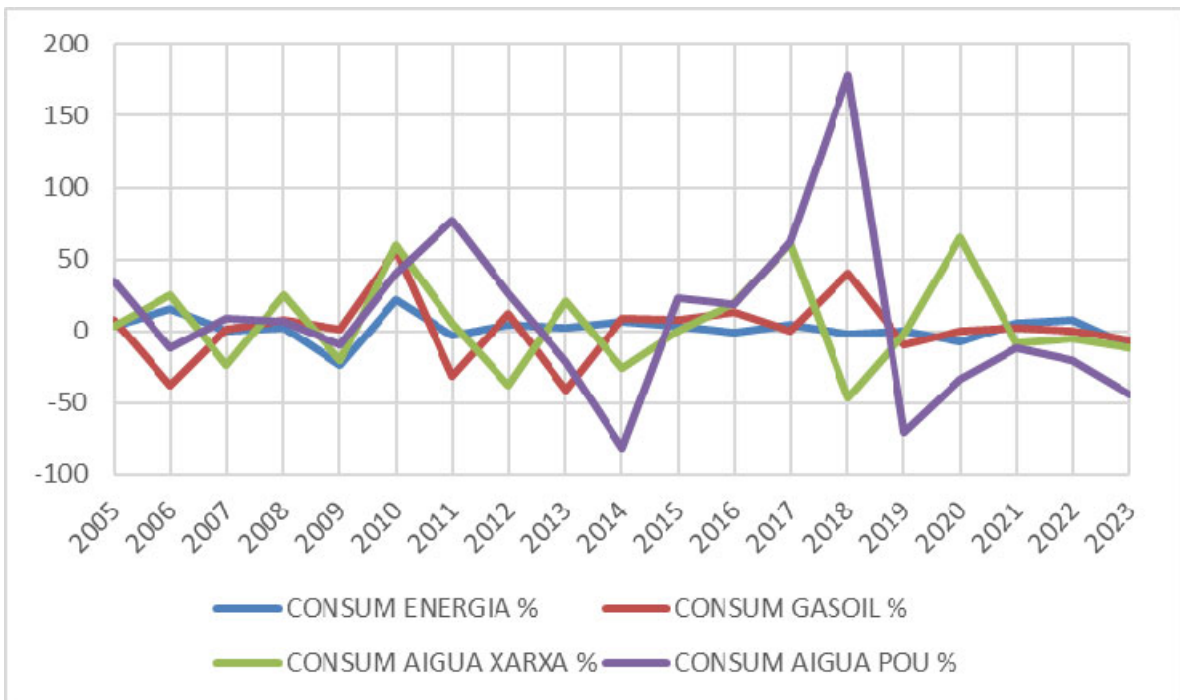
With regard to turnover, we can see its evolution over the years, in percentage values relative to the evolution with respect to the previous year.



### Graphs of historical variations in consumption and waste generation.

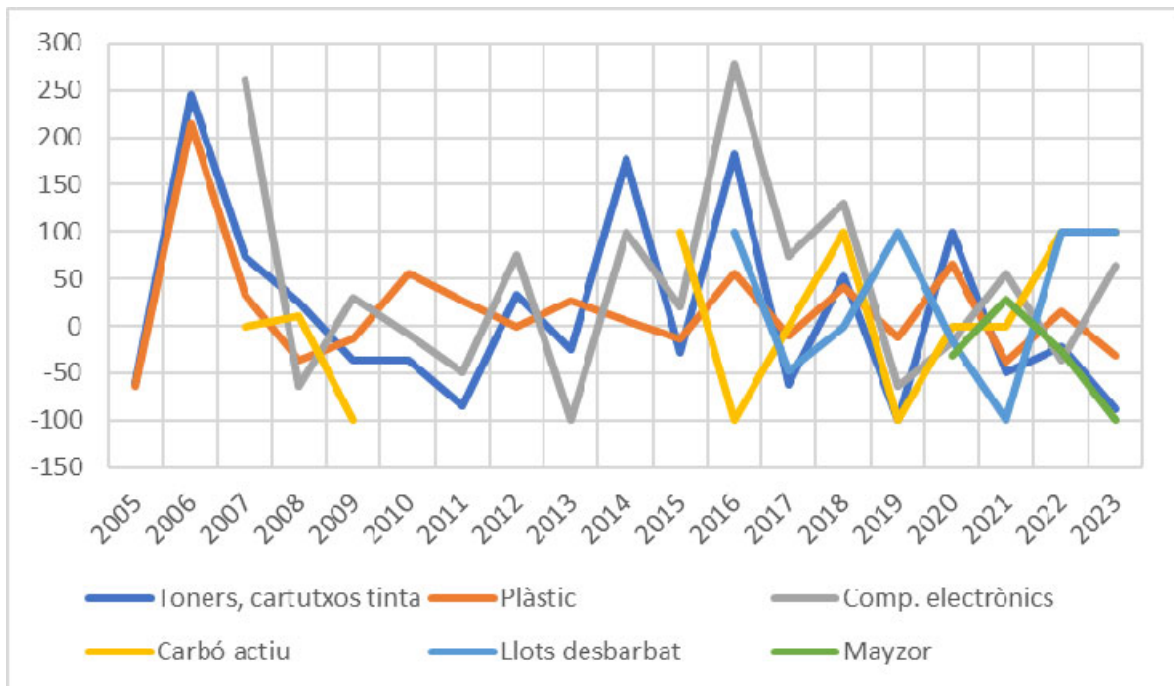
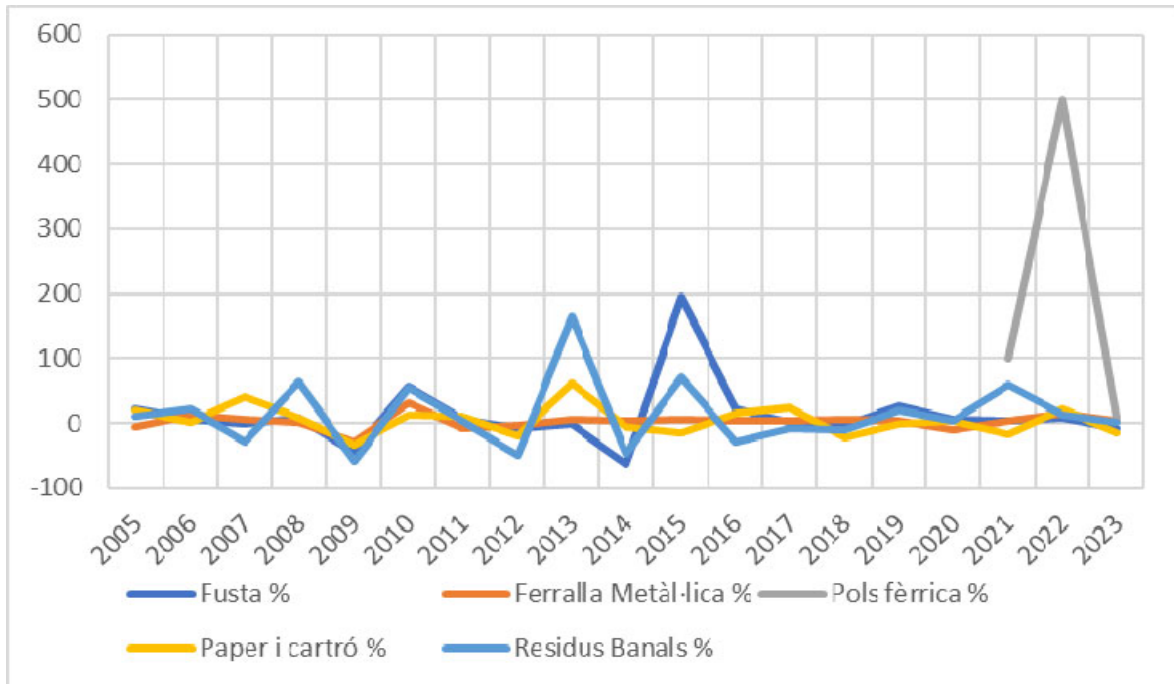
Below are the graphs of the variations in consumption and waste generation in percentage values relative to the evolution with respect to the previous year, so we can see the increases and decreases.

### CONSUMPTION



## GENERATION OF NON-SPECIAL WASTE

As for the non-special waste chart, it is presented below. a



## GENERATION OF SPECIAL WASTE

